

# LOADING INSTRUCTIONS

enVista® preloaded with the Bausch + Lomb SimplifEYE™ delivery system

enVista®  
one-piece hydrophobic acrylic intraocular lens

BAUSCH + LOMB  
SimplifEYE™  
delivery system

## step 1



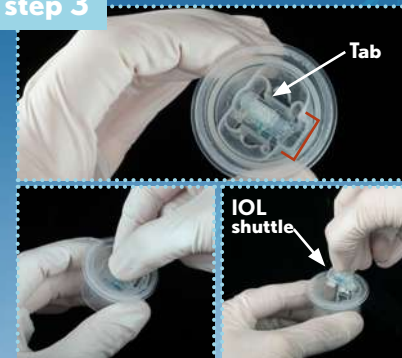
Open the box and remove the inserter and IOL pouch. Open the peel pouch to take the IOL vial out. Peel the tyvek lid and remove the inserter from the tray.

## step 2



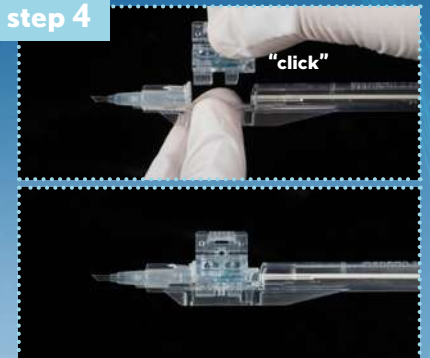
Ensure that the plunger is fully retracted by pulling it to the back and that the cartridge is fully forward by pushing it forward. The inserter is now ready for assembly with the lens shuttle.

## step 3



Remove the lid from the vial by peeling it away from you. Ensure that the U-channel (highlighted in red) in the vial is facing towards you. Using the thumb and index finger to remove the lens shuttle from the vial.

## step 4



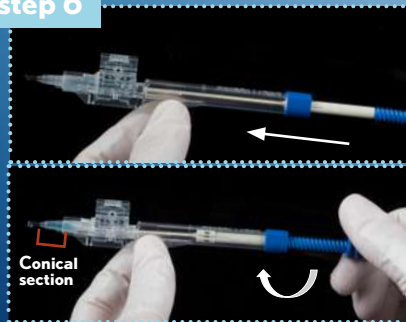
Grasp the inserter body with one hand and the shuttle with the other hand. Ensure that the four legs of the shuttle are centered to the inserter body side walls and insert the shuttle straight down until you hear an audible click. Visually confirm that the shuttle is sitting flush and that the top of the shuttle is horizontal with all four legs inside the side walls of the inserter body.

## step 5



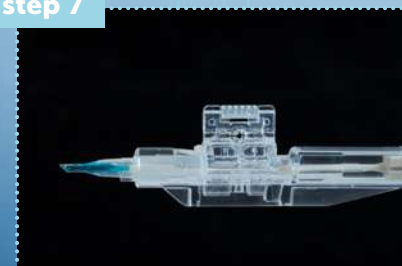
Hold down the tab on the top of the shuttle and apply viscoelastic\* into the viscoport of the cartridge. Visually verify that the viscoelastic has traveled up to the mark as shown in the image.

## step 6



While holding the inserter body with one hand gently advance the plunger with the other hand. Visually confirm that the plunger tip engages the lens, then turn the plunger knob clockwise to engage threads, continue to advance the plunger until the lens is in the conical section of the cartridge tip as shown in the image. The lens is now in the hand off position.

## step 7



To deliver the lens, insert the cartridge tip into the incision with the tip bevel facing down. Slowly rotate the plunger knob clockwise to advance the plunger until the lens is fully released into the eye.

\* Amvisc® Plus and OcuCoat®

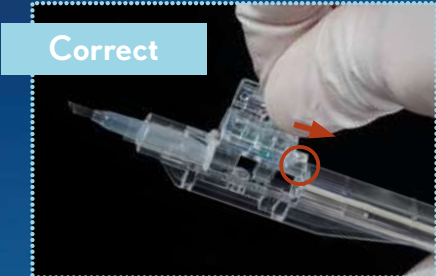


# LOADING INSTRUCTIONS

enVista® preloaded with the Bausch + Lomb SimplifEYE™ delivery system

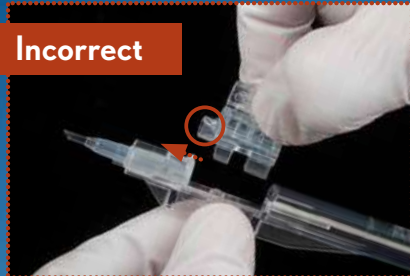
enVista®  
one-piece hydrophobic acrylic intraocular lens

BAUSCH + LOMB  
SimplifEYE™  
delivery system



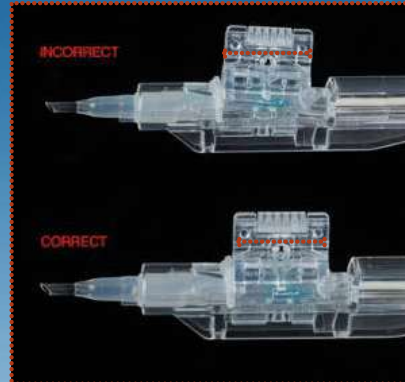
Correct

Correct orientation of the shuttle



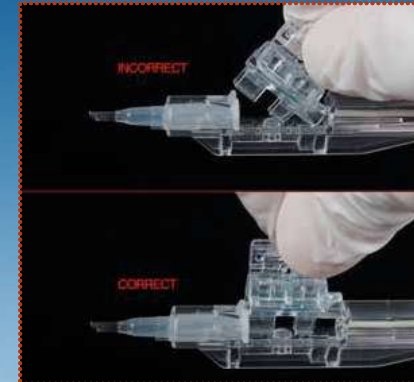
Incorrect

Incorrect orientation of shuttle



**WARNING:**  
Shuttle top not being horizontal to the inserter body as shown in the images above could cause damage to the lens when plunger is advanced.

**To correct this:**  
Push the shuttle down until it is horizontal



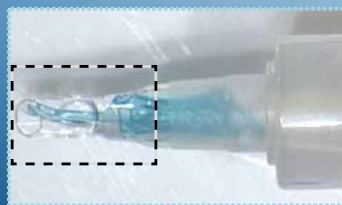
**WARNING:**  
Do not roll or tilt the shuttle while attaching to the inserter.



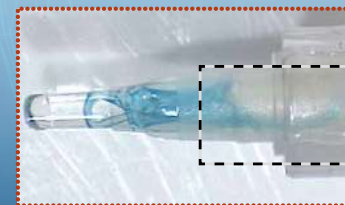
Proceed to deliver the lens.



Trailing Haptic looped around the plunger tip: Proceed to deliver with full plunger advancement.



Leading Haptic Straight: Rotate bevel clockwise before advancing the plunger to correctly place the leading haptic into the bag. Continue to advance the plunger and rotate counterclockwise back to the center to deliver optic into the bag.



Straight Trailing Haptic: Do not proceed.



Plunger Override: Do not proceed.